

JUST proofStation. JUST moduLight.



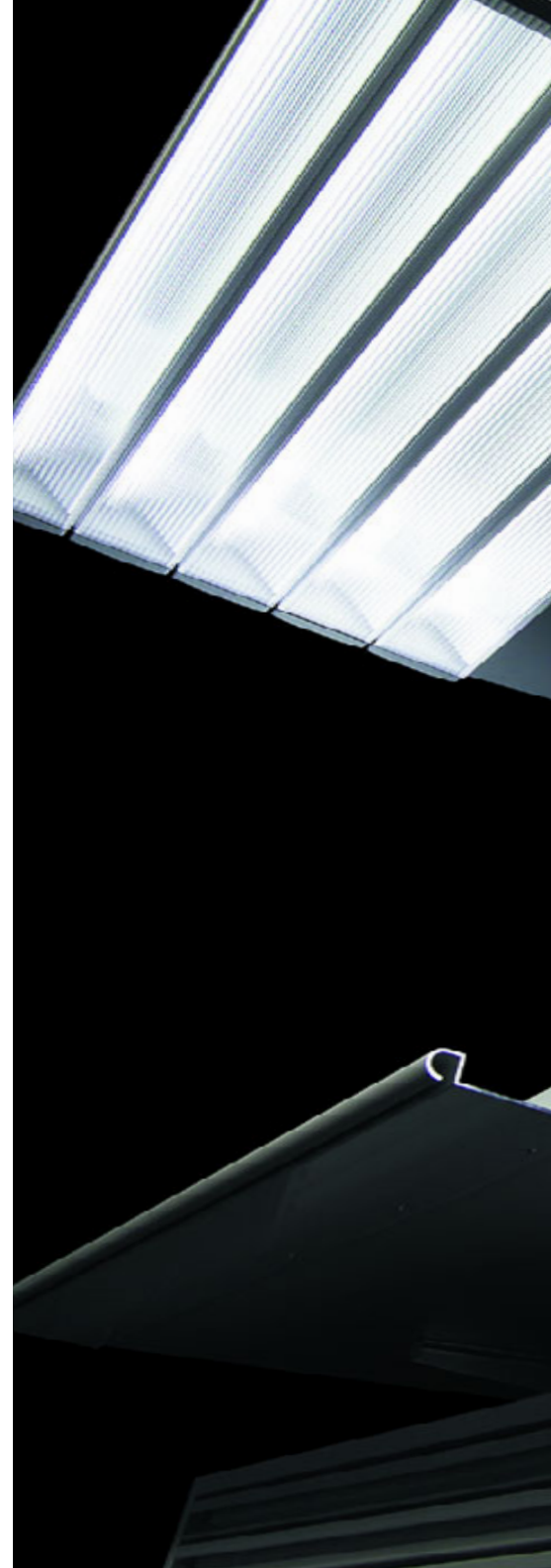
INT





JUST Normlicht is setting
new standards in the
world of color viewing & visual
color evaluation.

**The new definition in standardized lighting:
JUST proofStation**





JUST NORMLICHT

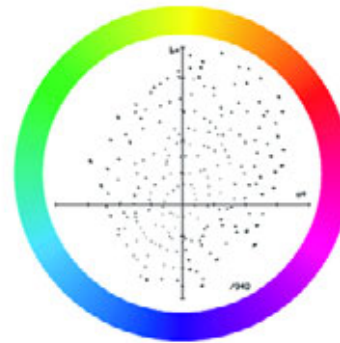
**JUST proofStation.
Perfecting standardized
lighting technology
for the digital work flow.**

Standardized lighting and strict color viewing conditions are required in all of the color reproduction and printing processes in the Graphic Arts & Photography Industry.

Only when all participants in the color reproduction process evaluate and compare colors under the same standardized lighting conditions optimal final color output can be achieved. Therefore, the industry has established the international standard ISO 3664:2000 which describes and defines viewing conditions for the Graphic Technology and Photography Industry.

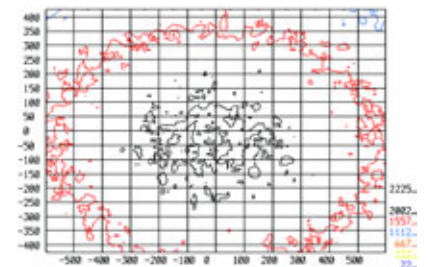
JUST NORMLICHT

Standardized lighting conditions are essential for the entire production process in the graphic arts industry. Only under standardized lighting conditions, as required by ISO 3664:2000, can colors be controlled, compared or judged objectively.



According to ISO 3664:2000, the rendering value CRI is derived from only 8 test colors. Because this is a relatively small color sample, JUST Daylight 5000 fluorescent tubes are further tested on 215 test colors.

Test chart showing evenness of light distribution.





Revolution in standardized lighting.

JUST Normlicht Visual Color Viewing Systems are providing superior standardized lighting conditions for the digital work flow.



The international standard ISO 3664:2000 has redefined the viewing conditions for the Graphic Arts and Photography Industry. These strict requirements cannot be met by using generic fluorescent tubes or fixtures.

JUST Normlicht, the worldwide recognized premier manufacturer of high quality color viewing products, has not only met the ISO 3664:2000 specification but has exceeded the standard by:

- a lumination quality with tightest chromaticity tolerances of 0.005
- a color temperature of 5000 Kelvin
- a CRI – Color Rendering Index >90 at approx. CRI = 97
- a luminance level of 2000 Lux (+/- 250 Lux) on the viewing surface
- an even distribution of the light and a glare and shadow free viewing environment



proofStation.
The new generation of
JUST Normlicht color
quality control systems.
Advanced lighting
technology for
the digital work flow.

Color Management. Next Generation.

JUST Normlicht proofStation is setting new standards in design, functionality and innovative lighting technology:

with **improved values** for light distribution and luminance levels

with a **perfect combination of form and function** by offering an ergonomically and aesthetically designed industrial product

with a **user friendly** design, ranging from integrated magnetic surfaces to automatic monitored LED indicators for relamping

with **modular single lamping units** allowing the construction and set up of custom sized proof lights

proofStation 20 and 22

A new color quality control system of exceptional style and design, providing even light distribution and a glare and shadow free color viewing environment.

JUST Normlicht color quality viewing system in 70x100 cm sheet size. Asymmetrical light reflectors with state of the art prismatic, optical diffusion screen. Equipped with 5 different light modules. Cabinet proofStation 22 with 8 standard height drawers including integrated drawer locking system.



proofStation 20 SP
with digital
dimming, Luminance
Level Control,
monitor mounting
arm



proofStation 20



proofStation 22



Be prepared for the future of Remote Proofing with JUST proofStation 20 SP

The way that colors are being printed is changing in a revolutionary way. The printing industry is changing rapidly into a digital work flow with the possibility to send digital data through the internet to various locations. Industry buzzwords like soft proofing, remote proofing, virtual proofing are everywhere, but do you get real results?

JUST Normlicht is now offering the perfect solution for your digital work flow. The **proofStation 20 SP** includes all of the newest technologies in lighting quality and adds new features meeting the requirements of the various new proofing systems.

The new digital dimming system with LLC (Luminance Level Control) provides you with the ability to adjust the luminance level on an even graduated scale and matches exactly the luminance level of your monitor. This system is also controlled by a light sensor that continually monitors and adjusts the luminance level.

Also included is a monitor mounting arm with standard VESA mounting options for every TFT-LCD monitor up to 15 kg.

proofStation 20 live:
The JUST proofStation in practical use at Deuschle Druck-Veredelung in Süßen/ Württ.

Item No.	Type	Outside Dimension H x W x W cm	Illumin. Area H x W cm	Watt
64675	proofStation 20	223 x 135 x 155	70 x 100	5 x 36
81232	proofStation 20 SP	223 x 135 x 155	70 x 100	5 x 36
64659	proofStation 22	223 x 135 x 155	70 x 100	5 x 36



proofStation 10
small floor standing model

The two compact models are designed for use in prepress houses, marketing agencies and publishing enterprises. When establishing standardized lighting conditions at every point in the color reproduction process, a common color communication platform will be the final result.

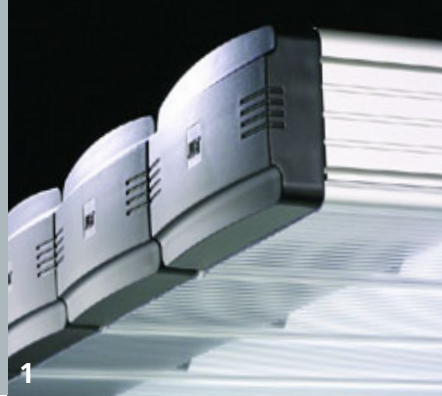
Digital work flow right from the beginnig.



proofStation 01
desktop model

proofStation 10 and 01
JUST Normlicht color quality viewing systems for sheet size 50 x 70 cm. Asymmetrical light reflectors with state of the art prismatic, optical diffusion screen. Four integrated modular lights.

Item No.	Type	Outside Dimension H x W x D cm	Illumin. Area H x W cm	Watt
64717	proofStation 01	120 x 97 x 110	50 x 70	4 x 18
64691	proofStation 10	210 x 97 x 110	50 x 70	4 x 18



1



2

proofStation Highlights:

- 1 This newly developed prismatic, optical diffusion screen allows for incomparable luminance level and evenness of light distribution on the viewing surface. Reflection, gloss and glare are non-existent.
- 2 A small, but nice detail: additional space added to the viewing surface for office utensils, loupes and other supplies.
- 3 TLSI Technology – integrated LED field with easy to understand signal technology. Automatic warning for relamping after 2500 hours of light bulb use. Green light indicates: up to 2300 hours of service tubes are working in ISO 3664:2000 standardized conditions. Yellow light: starting from 2300 hours. Red light: relamping necessary. Easy and comfortable!
- 4 The new digital dimming system with LLC (Luminance Level Control) provides you with the ability to adjust the luminance level on an even graduated scale and matches exactly the luminance level of your monitor. This system is also controlled by a light sensor that continually monitors and adjusts the luminance level.



3



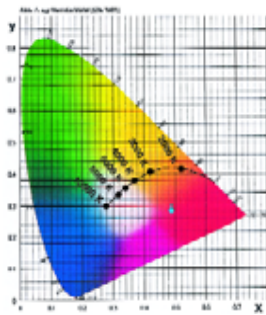
2



1



4



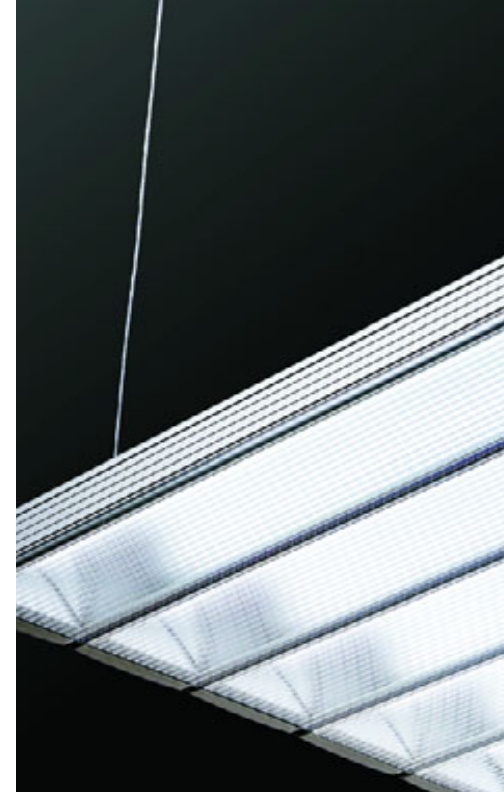
Color table according to DIN 5033 with Plank curve.

If you have a small meeting room or a complete print shop the moduLight is flexible enough to fit into every room situation and creates standard lighting conditions where ever they are needed.

Standardized light for flexible application: JUST moduLight

JUST moduLight has not only met the ISO 3664:2000 specification but has exceeded the standard by:

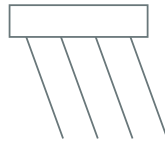
- a lamination quality with tightest chromaticity tolerances of 0.005
- a color temperature of 5000 Kelvin
- a CRI – Color Rendering Index >90 at approx. CRI = 97
- a luminance level of 2000 Lux (+/- 250 Lux) on the viewing surface
- an even distribution of the light and a glare and shadow free viewing environment



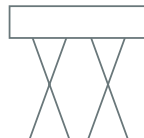
Item No.	Type	Outside Dimension L x W x D cm	Illumin. Area H x W cm	Lux at distance between lamp and surface
moduLight – asymmetrical				
64501	1/18-AS	88 x 15,5 x 8,5	30 x 50	350 lx/ 80 cm
64576	1/36-AS	133,5 x 15,5 x 8,5	30 x 100	780 lx/ 80 cm
81224	1/58-AS	163,5 x 15,5 x 8,5	30 x 140	900 lx/ 80 cm
64527	2/18-AS	88 x 31 x 8,5	50 x 50	700 lx/ 80 cm
64618	2/36-AS	133,5 x 31 x 8,5	50 x 100	1300 lx/ 80 cm
81208	2/58-AS	163,5 x 31 x 8,5	50 x 140	1550 lx/ 80 cm
64543	4/18-AS	88 x 62 x 8,5	50 x 70	2000 lx/ 85 cm
64592	5/36-AS	133,5 x 77,5 x 8,5	70 x 100	2000 lx/115 cm
81182	6/58-AS	163,5 x 93 x 8,5	100 x 140	2000 lx/125 cm
81166	24/36-AS	267 x 186 x 8,5	130 x 250	>2000 lx/200 cm

moduLight – cross-symmetrical

81141	2/18-AS-S	88 x 31 x 8,5	50 x 50	700 lx/ 80 cm
55715	2/36-AS-S	133,5 x 31 x 8,5	50 x 100	1300 lx/ 80 cm
81117	2/58-AS-S	163,5 x 31 x 8,5	50 x 140	1550 lx/ 80 cm
81091	4/18-AS-S	88 x 62 x 8,5	50 x 70	2000 lx/ 85 cm
55707	4/36-AS-S	133,5 x 62 x 8,5	60 x 100	2000 lx/110 cm
81067	4/58-AS-S	163,5 x 62 x 8,5	80 x 140	2000 lx/110 cm



moduLight – asymmetrical

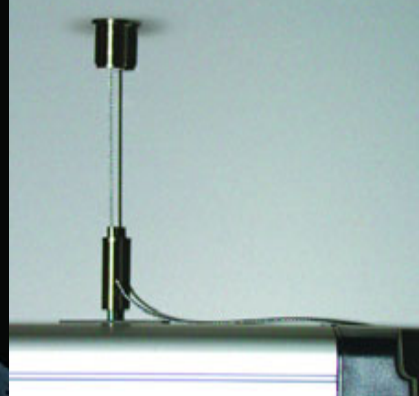


moduLight – symmetrical



moduLight 01

Single module used to illuminate smaller areas on the work desk in meeting rooms at publishers and ad agencies, prepress studios and copy shops.



TLSI Technology – integrated LED field with easy to understand signal technology. Automatic warning for relamping after 2500 hours of light bulb use.

Suspension from ceiling with an innovative, height adjustable steel cable system, suitable to the modern design of moduLight.



moduLight 02

Combination of two modules for use in meeting rooms, reception areas, customer lounges and linear applications adaptable to every need.



moduLight 05

Combination of five modules designed to illuminate an area of 70 x 100 cm exceeding all of the requirements of ISO 3664:2000.

JUST Normlicht GmbH
Vertrieb + Produktion
Tobelwasenweg 24
73235 Weilheim/Teck
Germany

phone +49 (0)7023 9504-0
fax +49 (0)7023 9504-52
info@just-normlicht.com
www.just-normlicht.com



Patents pending.



JUST setting standards.

JUST Normlicht France SARL
3 rue Louis Pasteur
67240 Bischwiller
France

Tél +33 (0)388 0628-22
Fax +33 (0)388 0628-23
info@just-normlicht.fr
www.just-normlicht.fr



Member of
FOGRA
Forschungsgesellschaft Druck eV
ICC
International Color Consortium
GATF
Graphic Arts Technical Foundation

